



SOUTH SKYLINE EMERGENCY PREPAREDNESS ORGANIZATION



South Skyline Association
SSA

South Skyline Fire Safe
Council

South Skyline Emergency
Preparedness Organization

Independent 501c3 Organizations



SSEPO

- Established 2000
- Primary focus: Emergency Preparedness
- Early accomplishments:
 - Developed two stations equipped with medical supplies and emergency communication capability
 - MROSD Skyline Field Office (Alpine / Hwy. 35)
 - Community of Las Cumbres
 - Built a neighborhood emergency preparedness model



SSEPO

- Established 501c3 Organization in 2016
- Non-Membership Organization
- Board of Directors:
 - President
 - Treasurer
 - Secretary
 - Medical Director
 - Communications Director
 - Neighborhood Coordinators



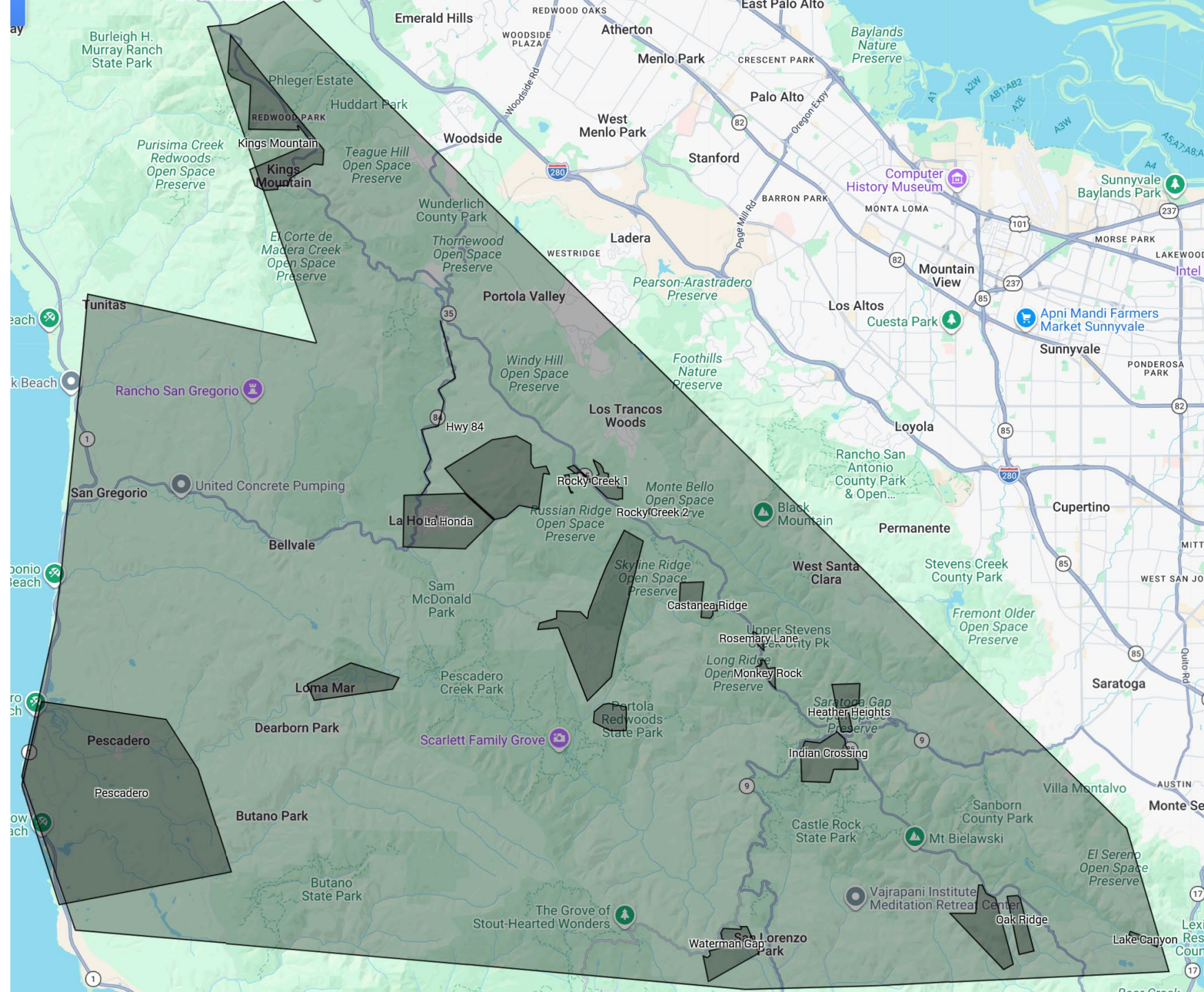
SSEPO Goals and Objectives

- Provide emergency preparedness education and training throughout South Skyline Area
 - Promote Emergency Preparedness and Response Capability at the **NEIGHBORHOOD** level
- Facilitate cooperation between tri-county emergency response organizations and community efforts
 - Provide critical medical and communications Infrastructure to augment official responses in a disaster situation
 - Facilitate CERT team organization and training
 - GIS Mapping of the neighborhoods





The Neighborhoods





Neighborhood Organization

- Training / Guidelines for creating The **Neighborhood Model**:
 - ✓ An identified coordinator
 - ✓ Phone tree
 - ✓ Radio communications
 - ✓ Emergency Plan – Unique to each community
 - ✓ Practice!!!
- Neighborhoods established: Las Cumbres, Portola Heights, Castanea Ridge, Monkey Rock, Rosemary Lane, Rocky Creek, Waterman Gap, Alpine and Middleton Tract, Lake Canyon, La Honda, Pescadero



Comprehensive Website:

www.ssepo.org

- Extensive information on how to be prepared for different kinds of disasters
- Emergency planning: Go Kits, prepare to stay or leave
- Education on how to organize a neighborhood
- Information on area volunteer groups: CERT, CEC, LAEG, ARES, Medical operations
- Emergency communications – who to call, radio communication, COVID-19, CZU Fire



Tested in Real Life

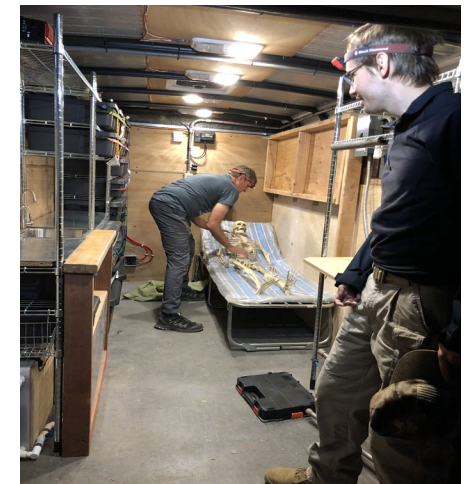


- CZU Fire:
 - SSEPO's Neighborhood Emergency Plan was implemented in several neighborhoods and emergency communications proved to be invaluable to residents
 - Lots of Information links added to the website
- COVID-19
 - Early on in the pandemic, important links added to the website
 - Dr. Rich Lee offered invaluable expertise to Skyline residents



Medical Infrastructure

- Medical Infrastructure:
 - Temporary Refuge Areas (TRAs) established at Skyline Ranger Station and Las Cumbres with caches of medical supplies
 - Assisted in the building of new Helicopter Landing Zone in Castanea Ridge
 - Mobile Medical Trailer built and fully stocked





Medical Training

Regular Community Training Sessions (In person and virtual)

- First Aid Workshops
- Held several on-line training sessions on “The First Arriver”, addressing what to do when you are the first on the scene of an accident – who, and how, to call for help; emergency first aid.
 - Created maps on most dangerous areas and location of call boxes
 - Reached hundreds of live participants, distributed many Trunk Kits for emergency use, and posted videos on web site.





Emergency Communications

- Provided grants to purchase GMRS (General Mobile Radio Service) radios to 6 neighborhoods. Middleton Tract added in 2020.
- Set up GMRS Repeater for Inter-Neighborhood communications
- Established South Skyline Emergency Communications Plan for HAM and GMRS / MURS radios
- HAM radio communication stations at Castanea Ridge, Las Cumbres, Portola Heights and Medical Resource Trailer





Emergency Communications



- Partnership with City of Palo Alto's Emergency Services. Plan for joint training.
- Installed printed communication equipment and solar power in Castanea Ridge Communication Trailer. Provides comms when everything else fails, including the internet.
- Completed two YouTube videos on CZU Fire Communications and Comm Trailer improvements



Collaboration with Fire Departments

- GIS Mapping completed in about 14 neighborhoods/areas, and updated maps placed in fire trucks
- Established South Skyline CERT (Community Emergency Response Team)
 - CERT Coordinator: Tom Hempel
 - CERT Program Manager – LHFB: Pat O’Coffey
 - Conducted Training Sessions and Drills – pre-COVID
 - On-Line Hybrid CERT Training introduced in 2020
- Numerous effective callouts during Landslides and Fires in recent years





Drills



- Conduct annual drills involving CERT, HAM (ARES) and GMRS radio communications, Medical and other volunteer groups such as Large Animal Evacuation, often in coordination with fire departments and public safety.

